

Bayfield Second Circuit Transmission Project

Xcel Energy is proposing to construct a new 34.5 kilovolt (kV) transmission line and two new substations in the Bayfield Peninsula area. The Bayfield Second Circuit Transmission line would run approximately 22 miles from a new Fish Creek Substation about four miles west of the City of Ashland to a new Pikes Creek Substation about two miles west of the City of Bayfield, Wisconsin, with an additional 3 mile 34.5 kV line connecting to the City of Washburn.

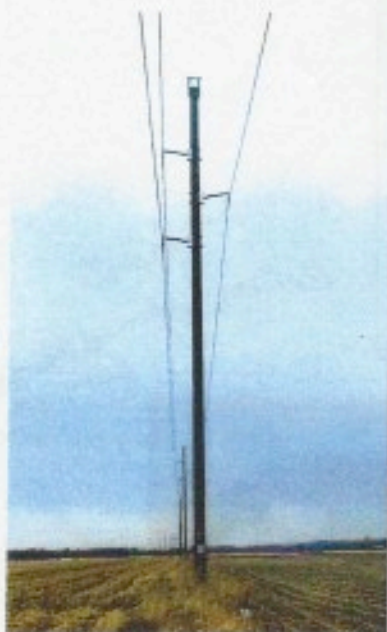
This project represents an evolution of the project initially presented to the public in 2013 as the Bayfield Loop Project. Xcel Energy's project team has made modifications to the project based on feedback received on that initial proposal. The Bayfield Second Circuit Project is the first phase in Xcel Energy's plans for transmission voltage support and reliability improvements on the Bayfield Peninsula.

Project Need

Electricity is currently provided to communities on the Bayfield Peninsula via the existing 34.5 kV "loop" transmission line. The proposed Bayfield Second Circuit Project would provide a second source of power to the area, and increase reliability by providing an alternative source of electricity should the existing line be damaged or require maintenance.

Project Schedule

Xcel Energy plans to submit an application for a Certificate of Authority to the Wisconsin Public Service Commission in the fall of 2017 seeking approval for the Bayfield Second Circuit Transmission Project. Pending approval, construction is expected to begin in 2019, with an estimated in-service date in 2020.

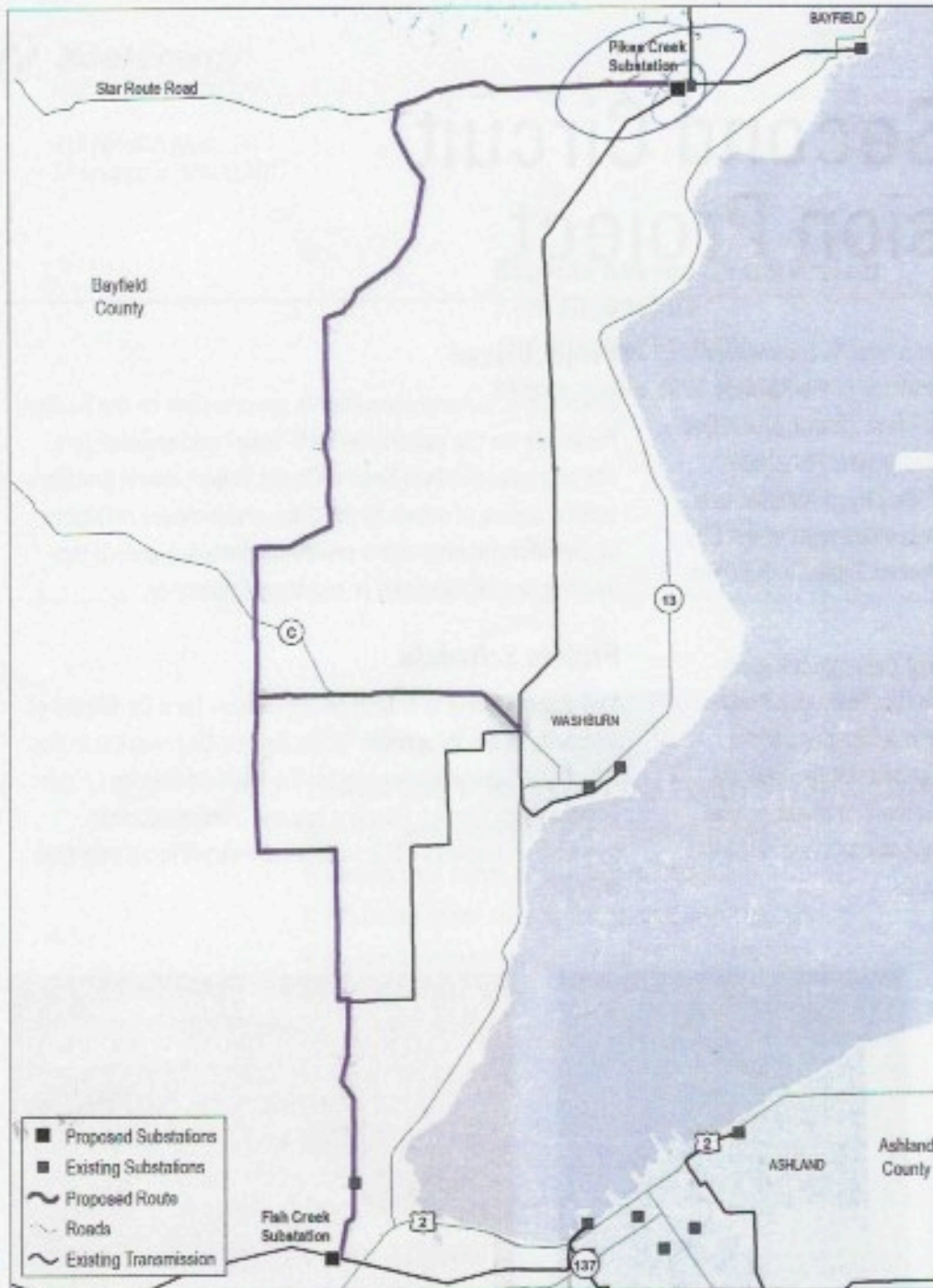


Single pole steel and wood structures approximately 50 to 60 feet in height are proposed on the Bayfield Second Circuit Project, with a 50-foot right-of-way. Some of the structures will require a distribution line be placed on the same structure.

Proposed Project Timeline

- 2017 – Submit Certificate of Authority to Wisconsin Public Service Commission
- 2018 – Begin land rights acquisition (Pending project approval)
- 2019 – Begin construction
- 2020 – Estimated in-service date

Proposed Bayfield Second Circuit Transmission Project



Contact Us

If you have questions or comments on the Bayfield Second Circuit Transmission Project you can contact:

Ellen Heine
Sr. Land Agent
Ellen.l.heine@xcelenergy.com
612-330-6073

Chris Buboltz
Project Manager
Christopher.w.buboltz@xcelenergy.com
612-330-1921

You can learn more about the project and view detailed maps at transmission.xcelenergy.com.



RESPONSIBLE BY NATURE®

xcelenergy.com | © 2017 Xcel Energy Inc. | Xcel Energy is a registered trademark of Xcel Energy Inc.

8/15/2017

Public Comment Form

BAYFIELD SECOND CIRCUIT TRANSMISSION LINE PROJECT

We need your input. Please take a few minutes to provide your comments or questions about the proposed Bayfield Second Circuit project and return your completed comment form.

Please check the following issues that are important to you for energy upgrade siting.

- | | |
|--|--|
| <input type="checkbox"/> Minimize visual impacts | <input type="checkbox"/> Follow existing transmission lines, railroads or highways |
| <input type="checkbox"/> Avoid impacts to water resources | <input type="checkbox"/> Keep costs low |
| <input type="checkbox"/> Avoid historic and cultural sites | <input type="checkbox"/> Avoid interference with farm operations |
| <input type="checkbox"/> Avoid close proximity to residences | <input type="checkbox"/> Avoid impacts to natural resources |
| <input type="checkbox"/> Other: _____ | |

Comments – your comment can be about a specific location or a general comment about the project. Please include an address or map if your comment is about a specific location.

How did you hear about the open house?

TAPE HERE (DO NOT STAPLE)



414 Nicollet Mall
Minneapolis, MN 55401

Place Stamp Here
Post Office
will not deliver
without postage

Bayfield Second Circuit Project
Attn: Ellen Heine
414 Nicollet Mall (6)
Minneapolis, MN 55401

THANK YOU FOR TAKING THE TIME TO PARTICIPATE.

Submit comments by the following means:

- Leave this form at the public meeting
- Mail the form or a letter to the address above
- Submit comments to ellen.l.heine@xcelenergy.com
- Call: 612-330-6073

PLEASE TELL US HOW TO REACH YOU.

Contact Information

Name _____

Representing (optional) _____

Address _____ City _____ State _____ ZIP _____

E-mail _____ Daytime phone (_____) _____

Fold this form letter style if you choose to mail it without an envelope,
Make sure that your contact information is facing inward and to add postage when mailing.